

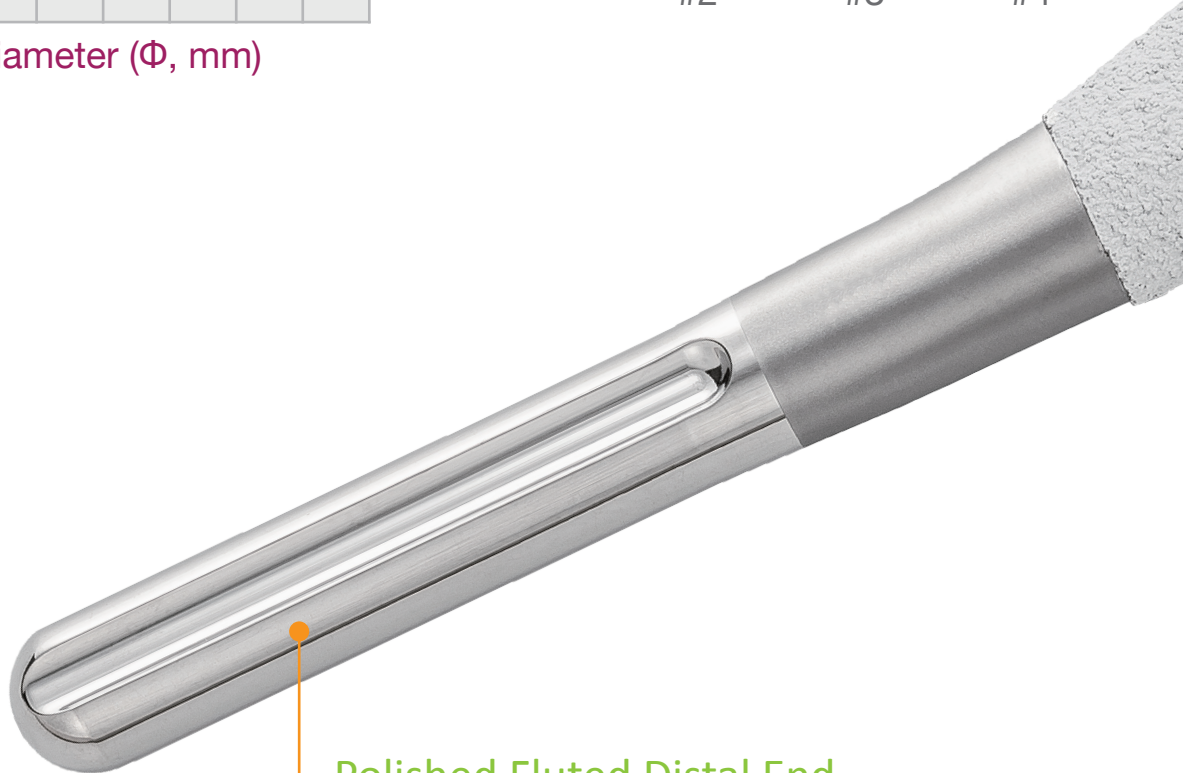
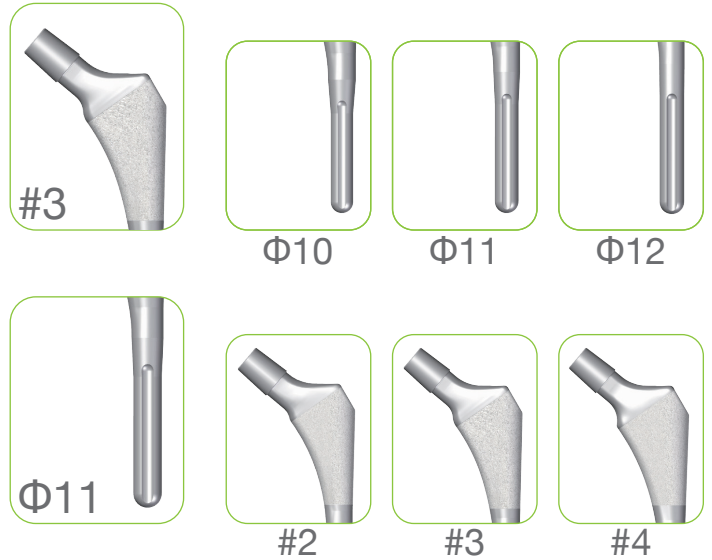


U2<sup>™</sup> Hip System  
HA Stem

# Matrix Design - Maximized Fit and Fill

The Matrix design addresses both proximal and distal canal fit and fill in order to facilitate load transfer<sup>1</sup> and achieve excellent initial stability<sup>2</sup>.

Proximal Size (#, Size)	#7							#7
	#6					#6	#6	
	#5				#5	#5		
	#4			#4	#4			
	#3		#3	#3	#3			
	#2		#2	#2				
	#1		#1					
	#0	#0						
		8	9	10	11	12	13	14
	Distal Diameter (Φ, mm)							



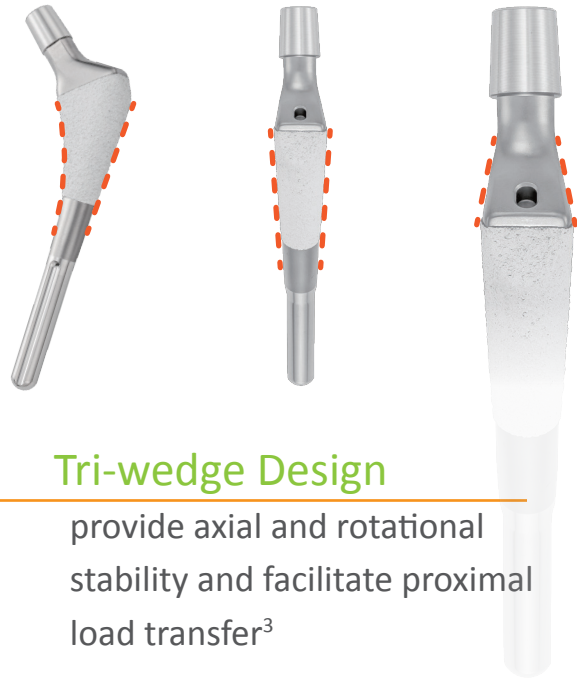
## Polished Fluted Distal End

avoid stress shielding and increase torsional stability

### References

1. Claus AM et al. Fractures of the greater trochanter induced by osteolysis with the anatomic medullary locking prosthesis. J Arthroplasty. 2002 Sep;17(6):706-12.
2. Mai KT et al. Cementless femoral fixation in total hip arthroplasty. Am J Orthop. 2010 Mar;39(3):126-30.

## 12/14 Morse Taper



## Tri-wedge Design

provide axial and rotational stability and facilitate proximal load transfer<sup>3</sup>



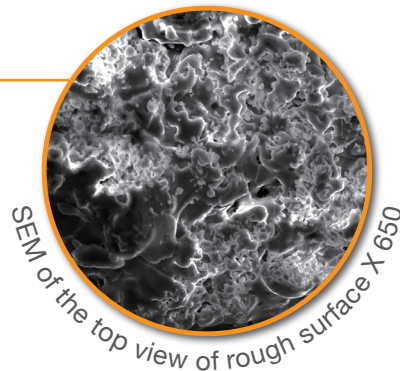
## New Instrument

Quick-connected holder offers easy-to-use instrument to facilitate surgical efficiency.



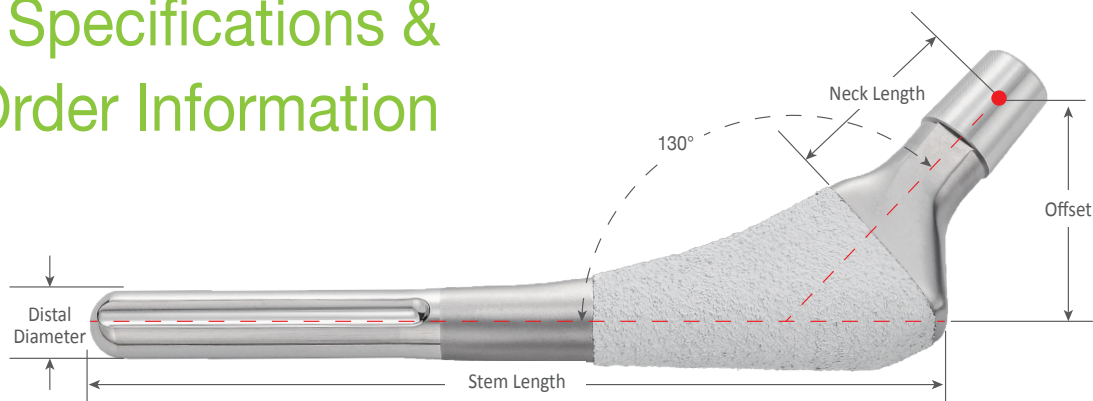
## Extended Dual Coating – Ti 500 μm plus HA 80 μm

Extended proximal 2/5 Ti plasma spray with HA dual coating facilitates biological fixation.



3. Mallory TH et al., Minimal 10-year results of a tapered cementless femoral component in total hip arthroplasty. J Arthroplasty. 2001 Dec;16(8 Suppl 1):49-54.

# Stem Specifications & Order Information



## With Metal Head

Cat. No.	Stem Size	Distal Diameter	Stem Length	Offset(mm) when head/neck prosthesis is :										Neck Length(mm) when head/neck prosthesis is :										
				26mm					28/32/36mm					26mm					28/32/36mm					
				+0	+3	+6	+9	-3	+0	+2.5	+5	+7.5	+10	+0	+3	+6	+9	-3	+0	+2.5	+5	+7.5	+10	
1104-1001	#0	8	120	30	32	34	36	28	30	32	34	36	38	27	30	33	36	39	27	30	32	35	37	40
1104-1012	#1	9	126	35	37	39	41	34	36	38	40	42	44	30	33	36	39	27	30	32	35	37	40	
1104-1023	#2	10	132	36	38	41	43	34	36	38	40	42	44	30	33	36	39	27	30	32	35	37	40	
1104-1033	#3	10	132	39	41	43	45	37	39	41	43	45	47	34	37	40	43	31	34	36	39	41	44	
1104-1024	#2	11	138	36	38	41	43	34	36	38	40	42	44	30	33	36	39	27	30	32	35	37	40	
1104-1034	#3	11	138	39	41	43	45	37	39	41	43	45	47	34	37	40	43	31	34	36	39	41	44	
1104-1044	#4	11	138	39	41	43	45	37	39	41	43	45	47	34	37	40	43	31	34	36	39	41	44	
1104-1035	#3	12	145	39	41	43	45	37	39	41	43	45	47	34	37	40	43	31	34	36	39	41	44	
1104-1045	#4	12	145	39	41	43	45	37	39	41	43	45	47	34	37	40	43	31	34	36	39	41	44	
1104-1055	#5	12	145	43	45	47	48	40	43	45	47	48	50	38	41	44	47	35	38	41	43	47	49	
1104-1056	#5	13	152	43	45	47	48	40	43	45	47	48	50	38	41	44	47	35	38	41	43	47	49	
1104-1066	#6	13	152	45	47	49	51	43	45	47	49	51	53	41	44	47	50	38	41	43	46	48	51	
1104-1067	#6	14	158	45	47	49	51	43	45	47	49	51	53	41	44	47	50	38	41	43	46	48	51	
1104-1078	#7	15	166	45	47	49	51	43	45	47	49	51	53	41	44	47	50	38	41	43	46	48	51	

## With delta Ceramic Head

Cat. No.	Stem Size	Distal Diameter	Stem Length	Offset(mm) when head/neck prosthesis is :								Neck Length(mm) when head/neck prosthesis is :												
				28mm			32/36/40mm			32mm	36/40mm	28mm			32/36/40mm			32mm	36/40mm					
				-2.5	+1	+4	-3	+1	+5	+8	+9	-2.5	+1	+4	-3	+1	+5	+8	+9					
1104-1001	#0	8	120	28	31	34	28	31	34	36	37	25	28	31	24	28	32	35	36					
1104-1012	#1	9	126	33	36	38	32	36	39	41	42	27	31	34	27	31	35	38	39					
1104-1023	#2	10	132	34	37	40	34	37	40	42	43	27	31	34	27	31	35	38	39					
1104-1033	#3	10	132	37	40	43	37	40	43	45	46	31	35	38	31	35	39	42	43					
1104-1024	#2	11	138	34	37	40	34	37	40	42	43	27	31	34	27	31	35	38	39					
1104-1034	#3	11	138	37	40	43	37	40	43	45	46	31	35	38	31	35	39	42	43					
1104-1044	#4	11	138	37	40	43	37	40	43	45	46	31	35	38	31	35	39	42	43					
1104-1035	#3	12	145	37	40	43	37	40	43	45	46	31	35	38	31	35	39	42	43					
1104-1045	#4	12	145	37	40	43	37	40	43	45	46	31	35	38	31	35	39	42	43					
1104-1055	#5	12	145	41	44	46	40	44	47	49	50	36	39	42	35	39	43	46	47					
1104-1056	#5	13	152	41	44	46	40	44	47	49	50	36	39	42	35	39	43	46	47					
1104-1066	#6	13	152	43	46	48	43	46	49	51	52	39	42	45	38	42	46	49	50					
1104-1067	#6	14	158	43	46	48	43	46	49	51	52	39	42	45	38	42	46	49	50					
1104-1078	#7	15	166	43	46	48	43	46	49	51	52	39	42	45	38	42	46	49	50					

### Office

#### ■ Taiwan

12F, No. 80, Sec. 1, Chenggong Rd, Yonghe Dist.,  
New Taipei City 23452, Taiwan  
Tel: +886 2 2929-4567 Fax: +886 2 2922-4567

#### ■ EU Representative

mdi Europa GmbH  
Langenhagener Strasse 71, 30855 Langenhagen, Germany  
Tel: +49-511-3908 9530 Fax: +49-511-3908 9539

#### ■ USA

UOC USA Inc.  
20 Fairbanks, Suite 173  
Irvine, CA 92618  
Tel: +1 949-328-3366 Fax: +1 949-328-3367

#### ■ China

United Medical Instrument Co. Ltd.  
7F, No.1405, GongheXin Road, Shanghai, China  
Tel: +86 21 3661-8055 Fax: +86 21 6628-3031



www.uoc.com.tw

All Rights Reserved, ©2014 United Orthopedic Corp.