

Put a smile on with Safetac® technology

Minimise pain¹²

- Safetac soft silicone formula does not tack to moist surfaces, ensuring the dressing will not stick to the wound on removal
- Safetac technology covers more skin surface, spreading peel forces on removal to prevent skin stripping and blistering

Minimise trauma^{6,7,8,9,10,11}

- Safetac technology seals the wound margins, protecting against exudate leaks and maceration
- Seals gently, easily and instantly, but can still be repositioned atraumatically if needed
- Supports optimal moist wound healing conditions

Peer reviewed publications referencing products with Safetac technology

- 10 randomised controlled trials
- 9 other observational surveys
- 31 case studies or case series
- 5 volunteer studies
- 5 laboratory studies
- 24 reviews
- Never "Data on file"



Safetac
TECHNOLOGY



A less painful dressing change is something to smile about



References:

1. Price P et al. Dressing-related pain in patients with chronic wounds: an international patient perspective. *International Wound Journal*, 2008.
2. Principles of best practice: Minimising pain at wound dressing related procedures. A consensus document. London: MEP Ltd, 2004.
3. Soon K et al. Pain-induced stress: a barrier to wound healing. *Wounds UK*, 2006.
4. Drew P et al. The cost of wound care in a local population in England. *International Wound Journal*, 2007.
5. Butcher M. A Delphi study of the financial impact of pain at dressing change. Oral presentation at the Wounds UK conference, Harrogate, United Kingdom 2010.
6. White R. Evidence for atraumatic soft silicone wound dressing use. *Wounds UK* 2005.
7. Dykes PJ et al. Effect of adhesive dressings on the stratum corneum of the skin. *Journal of Wound Care*, 2001.
8. Wiberg AB et al. Preventing maceration with a soft silicone dressing: in-vitro evaluations. Poster presented at the 3rd Congress of the WUWHS, Toronto, Canada, 2008.
9. Meaume S et al. A study to compare a new self adherent soft silicone dressing with a self adherent polymer dressing in stage II pressure ulcers. *Ostomy Wound Management*, 2003.
10. Waring M. et al. Cell attachment to adhesive dressings: qualitative and quantitative analysis. *Wounds UK* 2008.
11. Meuleneire F et al. Introduction of a New Procedure for Preventing Skin Lesions after Oncologic Breast Surgery. Poster presentation at the 3rd Congress of the WUWHS, Toronto, Canada, 2008.
12. White R. A Multinational survey of the assessment of pain when removing dressings. *Wounds UK* 2008.

The Mölnlycke Health Care name and logo, Safetac®, Mepilex® wound dressings, Mepitel®, Mepitel One®, Mepitel®, Mepitac® and Mepiform® are registered trademarks of Mölnlycke Health Care AB.
© Copyright (2011) Mölnlycke Health Care
Mölnlycke Health Care AB, Box 13080, SE-402 52 Göteborg, Sweden. Phone + 46 31 722 30 00.
www.molnlycke.com



MÖLNLYCKE
HEALTH CARE

Patented Safetac® technology is available exclusively on Mepilex® wound dressings, Mepitel® and other selected Mölnlycke Health Care dressings.



Safetac
TECHNOLOGY



MÖLNLYCKE
HEALTH CARE

Pain at dressing changes matters

More than 40% of patients in one survey considered pain at dressing changes to be the worst part of living with a wound.¹

WUWHS – World Union of Wound Healing Societies recommendations²

- 1) Assume all wounds are painful
- 2) Always assess pain
- 3) Select a dressing that is atraumatic to the wound and surrounding skin



Mepilex® Border
Shower-proof all-in-one dressing. With multilayered absorbent foam pad and Safetac technology, Mepilex Border is a gentler self-adherent dressing with high exudate management capability.

Mepilex® Border Ag
5-layer foam dressing absorbs and retains exudate effectively. For medium to heavy exuding wounds.

Mepilex® Border Lite
A thinner version of Mepilex Border offering the same benefits in a more conformable self-adherent dressing. Ideal for a wide range of wounds, available in small sizes.

Mepilex® Sacrum
Specifically shaped to fit the sacral area. Combines Safetac technology with effective exudate management. Stays in place, highly conformable and gentle on the surrounding skin.

Absorbency rating: ●●● Absorbency rating: ●●● Absorbency rating: ● Absorbency rating: ●●●



Sacral pressure ulcer Infected foot ulcer Digit wound Sacral pressure ulcer



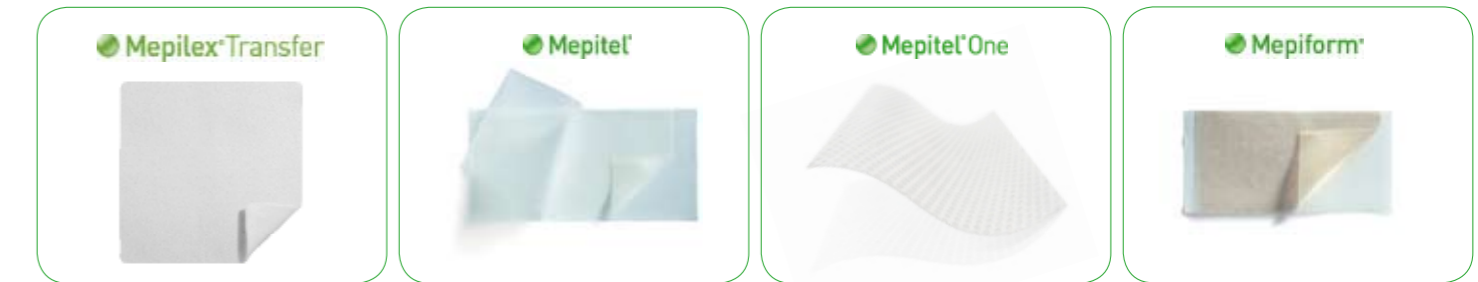
Leg ulcer Infected diabetic foot ulcer Diabetic foot ulcer Sacral pressure ulcer, day 0



Surgical incision Partial thickness burn Foot ulcer Sacral pressure ulcer, day 21



Mepilex® Border					Mepilex® Border Ag					Mepilex® Border Lite					Mepilex® Border Sacrum				
Art. No	Size cm	Size inch	Pcs/shelf cont.	Pcs/transp. cont.	Art. No	Size cm	Size inch	Pcs/shelf cont.	Pcs/transp. cont.	Art. No	Size cm	Size inch	Pcs/shelf cont.	Pcs/transp. cont.	Art. No	Size cm	Size inch	Pcs/shelf cont.	Pcs/transp. cont.
295200	7,5x7,5	3x3	5	70	395200	7,5x7,5	3x3	5/70	5/70	281000	4x5	1,6x2	10	70	282000	18x18	7x7	5	40
295300	10x10	4x4	5	50	395300	10x10	4x4	5/50	5/50	281100	5x12,5	2x5	5	65	282400	23x23	9x9	5	25
295400	15x15	6x6	5	50	395400	15x15	6x6	5/50	5/50	281200	7,5x7,5	3x3	5	70					
295600	15x20	6x8	5	45	395600	15x20	6x8	5/45	5/45	281300	10x10	4x4	5	50					
295800	10x20	4x8	5	35						281500	15x15	6x6	5	50					
295900	10x30	4x12	5	25															
					395800	10x20	4x8		5/35										
					395700	10x25	4x10		5/35										
					395900	10x30	4x12		5/25										



Mepilex® Transfer
Combined Safetac technology and thin, highly absorbent and conformable foam. Ideal for difficult-to-dress wounds, Mepilex Transfer allows effective transfer of exudate to a secondary dressing to minimise risk of leakage and maceration on highly exuding wounds.

Mepitel®
Mepitel is designed for direct contact with the wound, allowing a separate absorbent dressing to be applied without sticking to the wound. Mepitel has Safetac on both sides.

Mepitel® One
Mepitel One is designed for direct contact with the wound, allowing a separate absorbent dressing to be applied without sticking to the wound. Mepitel One has Safetac on one side only.

Mepiform® is a discreet dressing for treating scars.

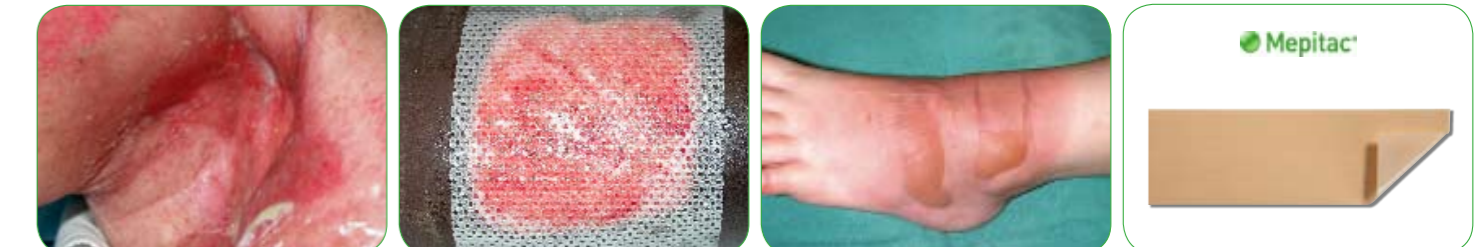
Absorbency rating: ●●● Absorbency rating: ◊-●●● Absorbency rating: ◊-●●●



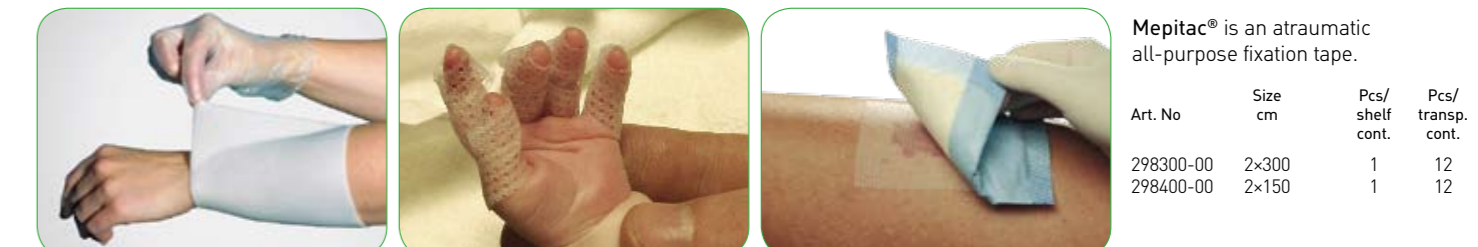
High exuding leg ulcer Skin tear Deep partial thickness burn Oil burn scar



Fungating wound Meshed graft Mepitel One on surgical incision Trauma scar



Radiotherapy induced skin damage Mepitel on a donor site Superficial partial thickness burn with blisters



Mepilex® Transfer					Mepitel®					Mepitel® One				
Art. No	Size cm	Size inch	Pcs/shelf cont.	Pcs/transp. cont.	Art. No	Size cm	Size inch	Pcs/shelf cont.	Pcs/transp. cont.	Art. No	Size cm	Size inch	Pcs/shelf cont.	Pcs/transp. cont.
294800	15x20	6x8	5	40	290510	5x7,5	2x3	10	60	290510	5x7,5	2x3	10	60
294502	20x50	8x20	2	12	290710	7,5x10	3x4	10	50	290710	7,5x10	3x4	10	50
294600	7,5x8,5	3x3,3	5	70	291010	10x18	4x7	10	50	291010	10x18	4x7	10	50
294700	10x12	4x4,7	5	50	292005	20x30	8x12	5	30	292005	20x30	8x12	5	30



Mepitac® is an atraumatic all-purpose fixation tape.

Art. No	Size cm	Pcs/shelf cont.	Pcs/transp. cont.
298300-00	2x300	1	12
298400-00	2x150	1	12



Pain causes stress. Stress delays healing.

It is now widely recognised that pain and the anticipation of pain is highly stressful for patients¹. Studies have also clearly shown that stress can delay wound healing. Patients with higher levels of stress can experience elevated levels of cortisone release and suppressed inflammatory responses, impeding the speed and viability of wound healing.³

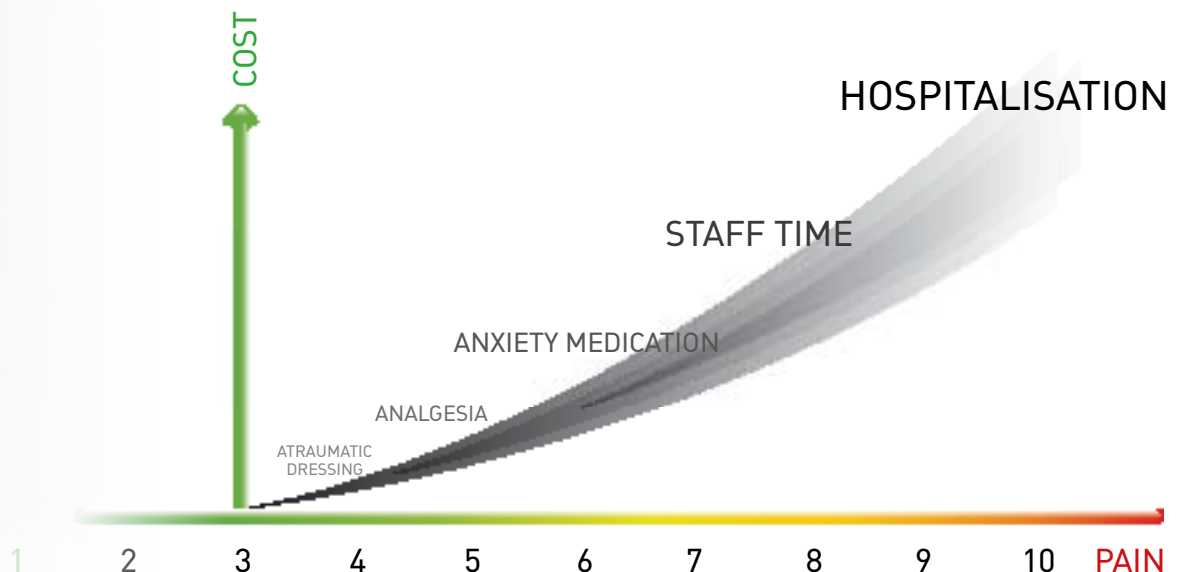


Pain: the most important stress factor you can influence

Assessment and management of wound pain is an opportunity for the clinician to influence stress factors that have been proven to delay healing. Delayed wound healing increases treatment costs and takes more valuable staff time, and can cause unnecessary patient suffering.

The high cost of pain

Both the psychological and physical impacts of pain require treatment – analgesic and anxiety medication and added staff time^{3,4} – all contributing significantly to the overall expense of wound care. This financial burden dwarfs the cost of the dressing itself. Investing in less painful and atraumatic specialised dressings is a way to minimise the true costs of wound care treatment.^{4,5}



Safetac[®] technology hurts less

Safetac is a patented adhesive technology that minimises pain to patients and trauma to wounds. Safetac technology is available exclusively on Mölnlycke Health Care dressings, including Mepilex[®] wound care dressings, Mepitel[®], Mepiform[®] and Mepitac[®].

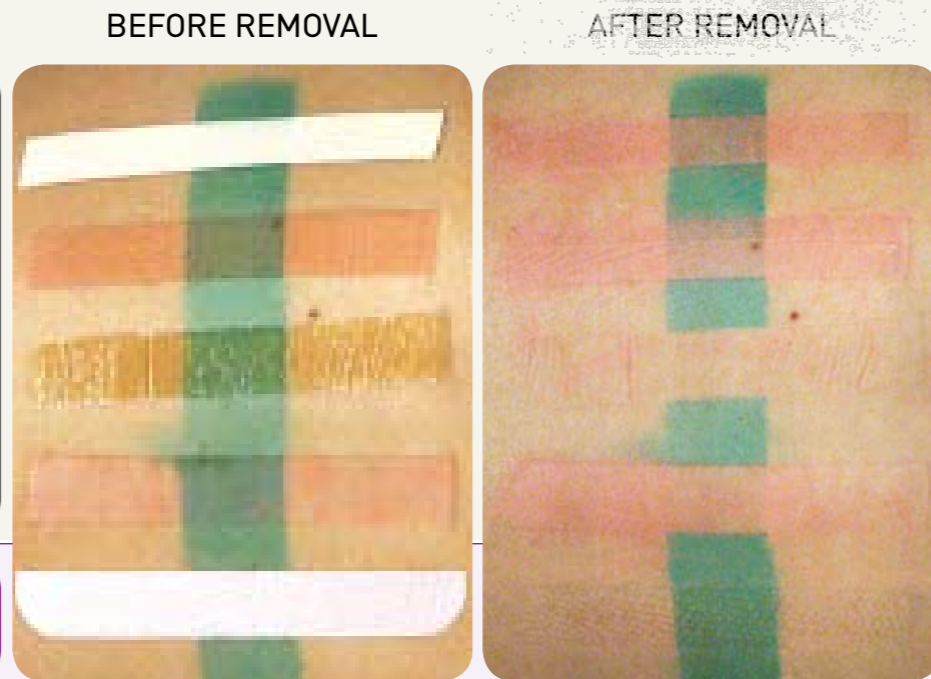
Safetac technology is less painful because it

- 1) adheres gently to dry intact skin, but not to moist wound surfaces⁶
- 2) conforms to the skin's uneven surface thereby covering a larger surface area which spreads peel forces on removal to prevent skin stripping⁷
- 3) seals around wound margins, ensuring exudate does not spread to the surrounding skin thereby minimising maceration^{8,9}

TRADITIONAL ADHESIVE



SAFETAC[®] TECHNOLOGY



A study compared the effects of a dressing with Safetac technology with four commonly-used adhesive dressings on stripping of epidermal cells. The skin was stained with dye to provide an indicator of the amount of stratum corneum removed by the dressings.

The amount of dye remaining on the skin at 72 hours was assessed – for the dressing with Safetac technology, the dyed part remained intact. The study proved dressings with Safetac technology are atraumatic and do not cause skin stripping.⁷

LESS SKIN STRIPPING⁷
 + LESS WOUND ADHERENCE⁶
 + LESS MACERATION^{8,9}



The science of Safetac[®] technology

Safetac technology's soft silicone conforms to the skin's uneven surface, while other adhesives adhere only to the top of the skin's surface.

This minimises pain at removal, seals the wound margins effectively and helps prevent blister formation.

ADHERENCE	SEALING	SKIN STRIPPING	TISSUE TRAUMA
<i>Traditional adhesives only adhere to the top of skin pores, and must stick harder to stay in place</i>	<i>Exudate is able to travel through the dips and valleys between pores, spreading outward and increasing the risk for maceration</i>	<i>Electrone microscope of acrylate adhesive after dressing removal. Because of the force needed to stick to the tops of pores and the smaller contact area, sheer forces can strip skin at removal.</i>	<i>With less skin contact, the adhesive is at risk of slight moves and can lead to the friction that forms blisters</i>
<i>Safetac soft silicone adhesive conforms to the skin's pores, sealing the wound</i>	<i>Exudate has nowhere to go, stopping the spread and helping to prevent maceration</i>	<i>Electron microscope picture of a dressing with Safetac after removal.¹⁰ Safetac is in contact with much more skin area, spreading peel forces to avoid skin being stripped at dressing removal.</i>	<i>More skin contact also eliminates the risk for friction from slighter movement, helping to prevent blistering.¹¹</i>

=LESS PAIN TO PATIENT AND TRAUMA TO WOUND¹²

Pain on dressing removal: Results from a multinational survey

Pain and trauma at dressing removal is a commonly acknowledged issue for patients.

In the largest survey of its kind ever made 3034 patients from 20 countries

and with a variety of wound types* were interviewed.¹²

Over two visits, each patient was asked

1) the difference in pain between the advanced dressings

2) which dressing they preferred

At the same time the caregiver was asked to evaluate wound trauma on removal.

*Wound types:

31% pressure ulcer

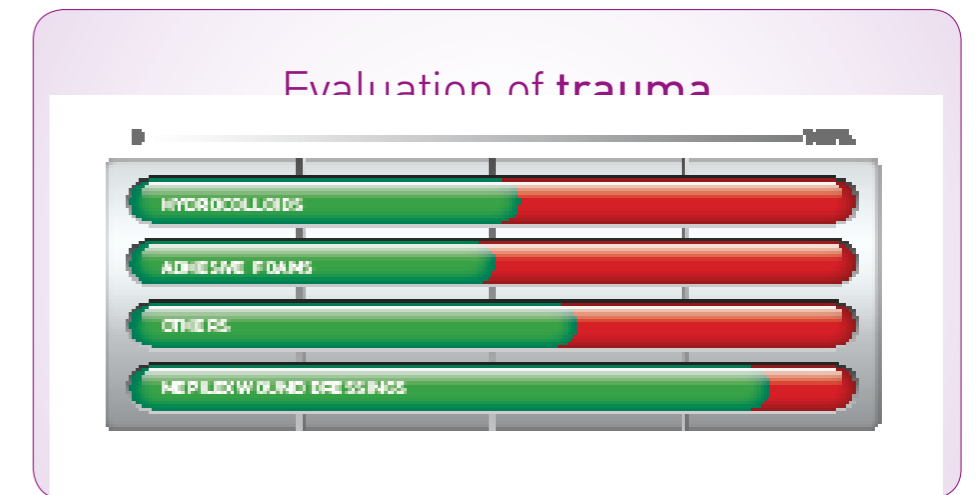
30% leg ulcer

13% skin tear

7% diabetic foot ulcer

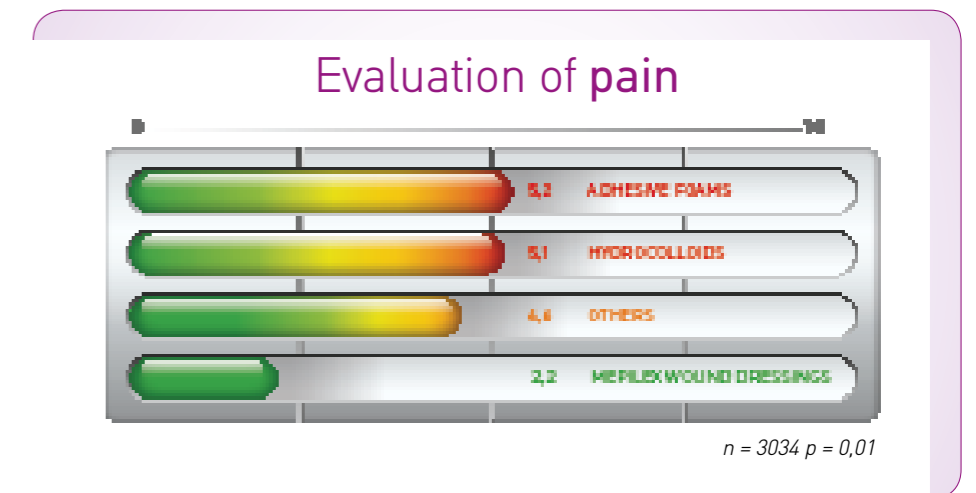
4% burn

15% other



Wound trauma on removal evaluated by the care giver¹²

● = no to very slight trauma ● = moderate to high trauma



Pain on removal evaluated by the patient¹²

0 =no pain to 10 =unbearable pain

Patients prefer dressings with Safetac® technology

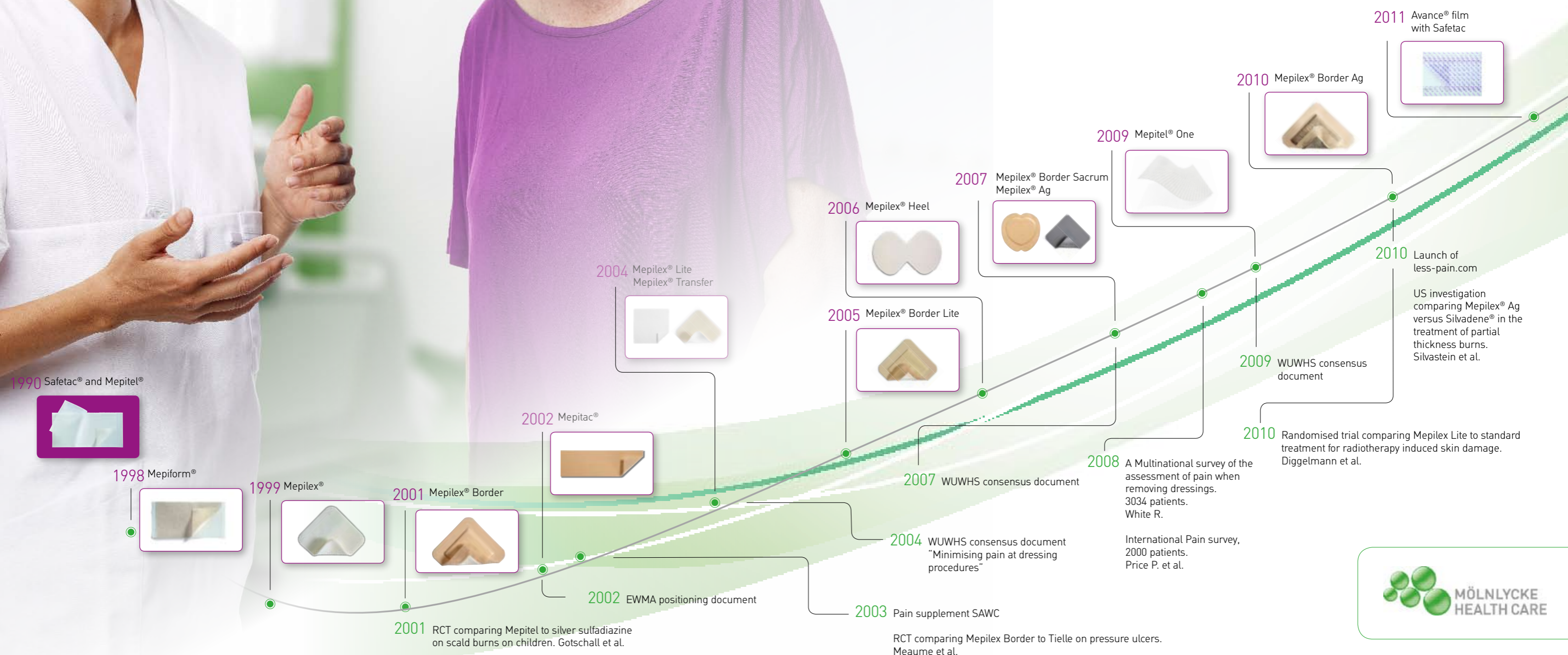
The results of the survey showed an overwhelming, statistically significant preference for dressings with Safetac technology. They are significantly less painful than other advanced dressing. **93% of patients wished to continue with the dressing with Safetac technology.** Patients prefer dressings with Safetac technology because they are less painful at dressing removal.¹²

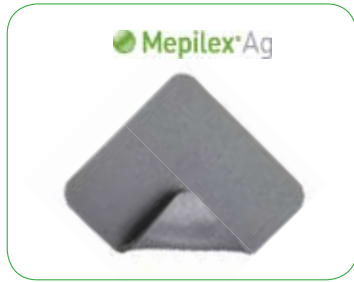
Experts on wound care pain management

Setting the standard for evidence that matters

Much of the focus of our research, development and product line is dedicated to eradicating unnecessary pain at dressing procedures

- We were the first company to invest in establishing awareness of pain and trauma at dressing changes as significant considerations to proper healing
- We took a leadership role in establishing the WUWHS consensus documents that guide wound care practice worldwide today
- Mölnlycke Health Care has also led the way in the procurement of valid clinical evidence for wound care products
- When we make a claim, we have clinically-relevant proof to back it
- We do not refer to "Data on file", because it is not sufficient to allow health care professionals to choose their care strategies in confidence.





Mepilex®

Effective, absorbent foam dressing with Safetac® technology for sealing the wound and to minimise pain on removal. Soft and highly conformable. Ideal for cutting to difficult-to-dress areas.

Mepilex® Lite

A thinner version of Mepilex offering the same benefits but in a thinner, more conformable design that provides more flexible treatment options.

Mepilex® Heel

All the advantages of Safetac technology in a foam dressing designed specifically for heel wounds. Fits most heels.

Mepilex® Ag

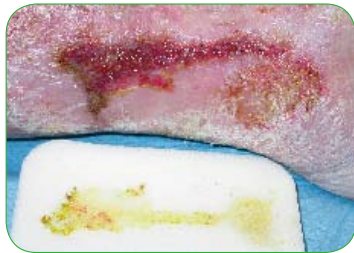
Antimicrobial foam dressing that protects the skin and targets bacteria with the proven efficacy of silver.

Absorbency rating: 🟢🟢

Absorbency rating: 🟢

Absorbency rating: 🟢🟢

Absorbency rating: 🟢



Leg ulcer



Diabetic foot ulcers



Pressure ulcer



Leg ulcer



Foot ulcer



Leg ulcer



Pressure ulcer



Deep partial thickness burns



Partial superficial burn



Radiotherapy induced skin damage



Easy application



Foot ulcer



Mepilex®

Art. No	Size cm	Size inch	Pcs/shelf cont.	Pcs/transp. cont.
294100	10x10	4x4	5	70
294200	10x20	4x8	5	30
294300	15x15	6x6	5	30
294400	20x20	8x8	5	30

Mepilex® Lite

Art. No	Size cm	Size inch	Pcs/shelf cont.	Pcs/transp. cont.
284000	6x8.5	2.4x3.4	5	70
284100	10x10	4x4	5	50
284300	15x15	6x6	5	50
284500	20x50	8x20	2	12

Mepilex® Heel

Art. No	Size cm	Size inch	Pcs/shelf cont.	Pcs/transp. cont.
288100	13x20	5x8	5	25

Mepilex® Ag

Art. No	Size cm	Size inch	Pcs/shelf cont.	Pcs/transp. cont.
287110	10x10	4x4	5	70
287210	10x20	4x8	5	45
287310	15x15	6x6	5	35
287410	20x20	8x8	5	25